

Figure 9a. Immunohistochemistry for MIB-1 antibody demonstrating low MIB-1 LI in a WHO grade I meningioma, (X 400).

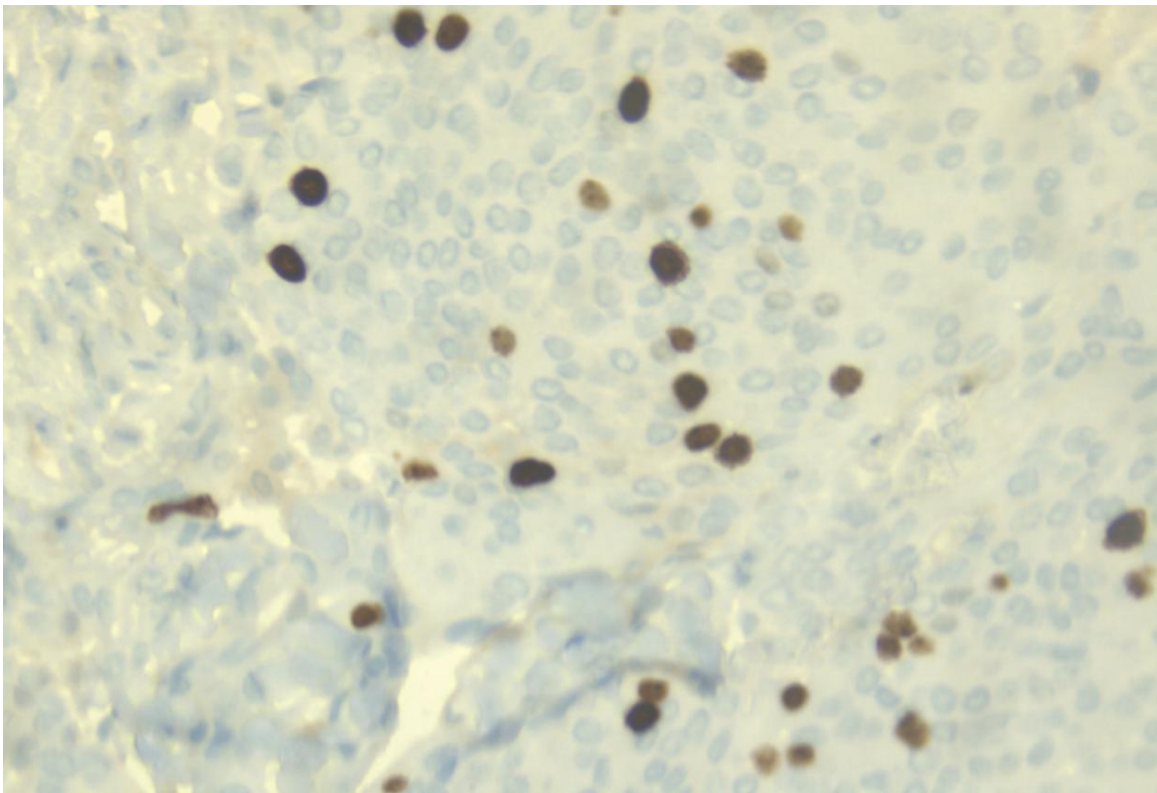


Figure 9b. Immunohistochemistry for MIB-1 antibody demonstrating high MIB-1 LI, in a WHO grade II meningioma, (X 400).

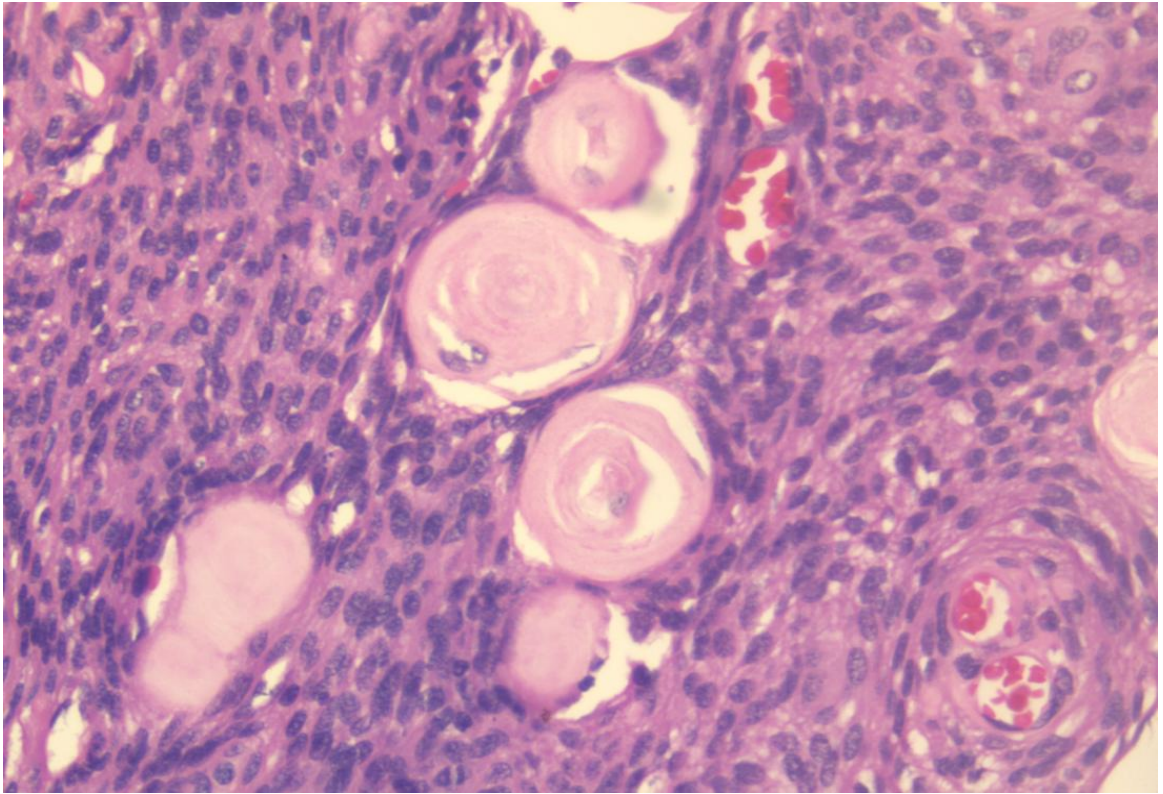


Figure 12a. Hypercellularity in a WHO grade II, atypical meningioma, (H&E X 400).

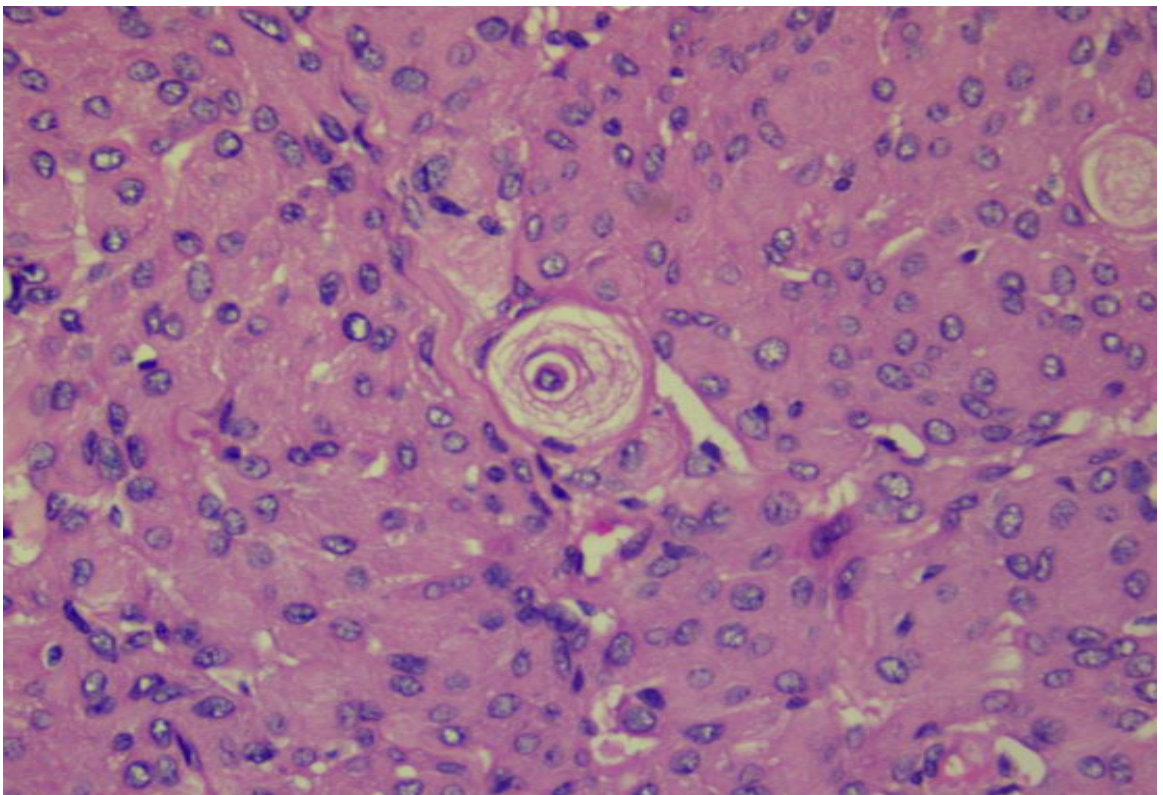


Figure 12b. Normal cellularity in a WHO grade I meningioma. Note the contrast to the hypercellularity seen in figure 12a, (H&E X 400).

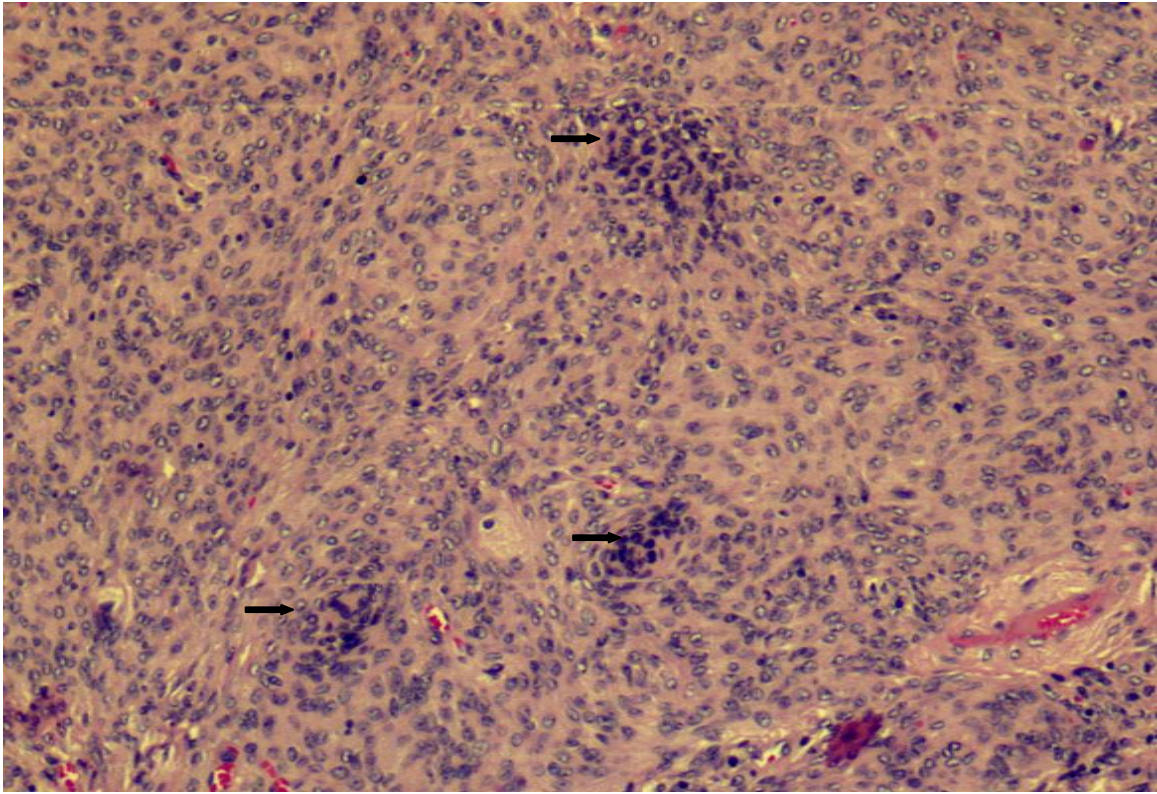


Figure 12c. Multiple foci of small cell formation in a WHO grade II meningioma, (H&E X 100).

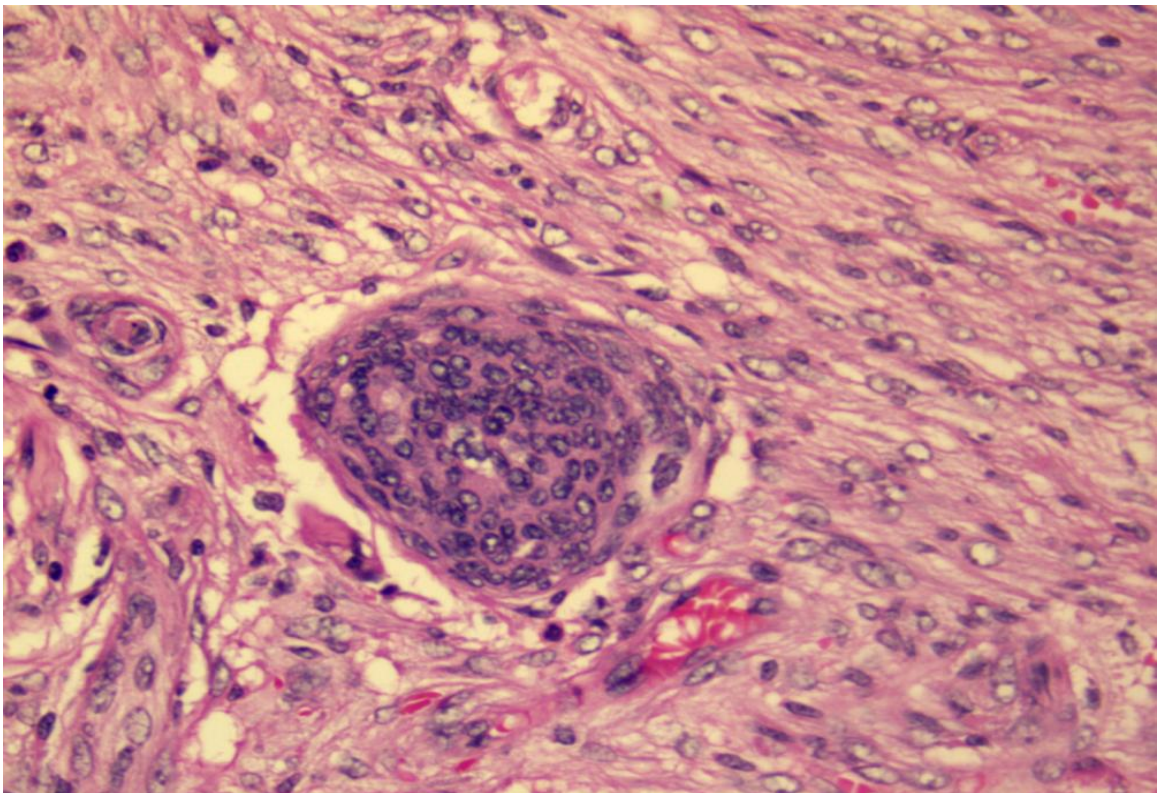


Figure 12d. High power view of small cell formation, (H&E X 400).

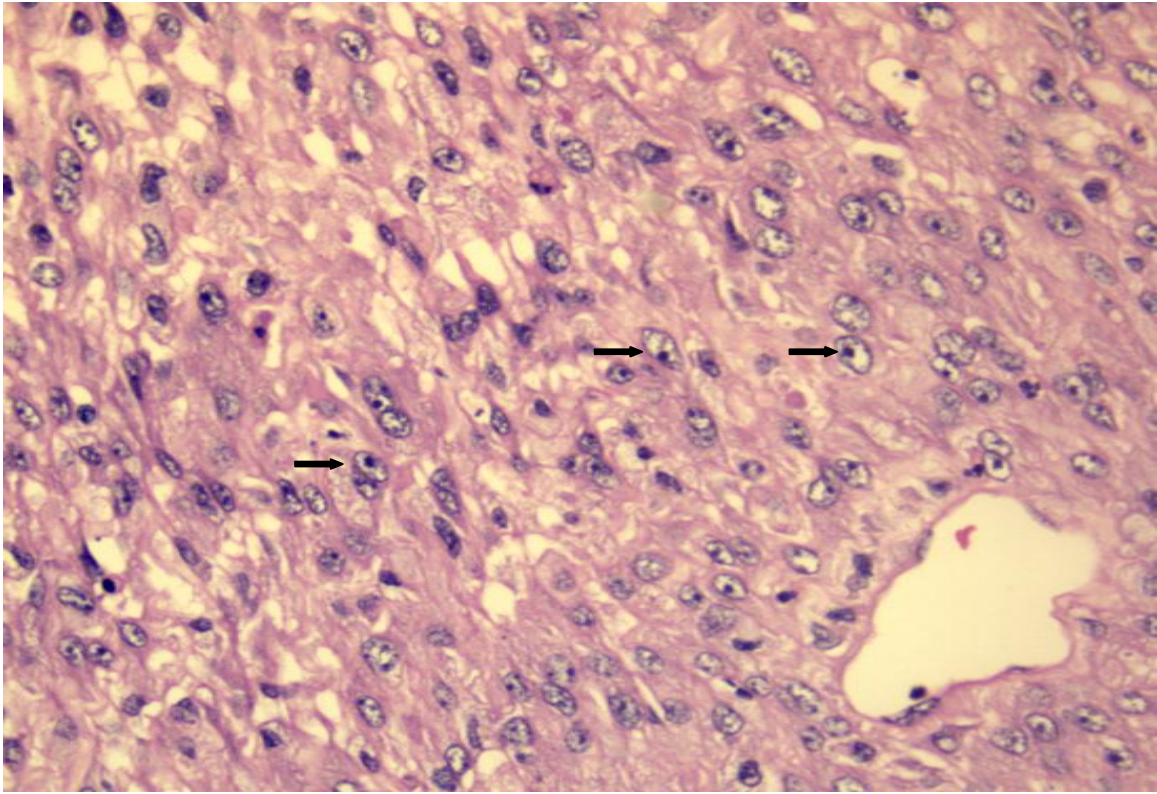


Figure 12e. Macronucleoli (arrows) in an atypical meningioma, (H&E X 400).

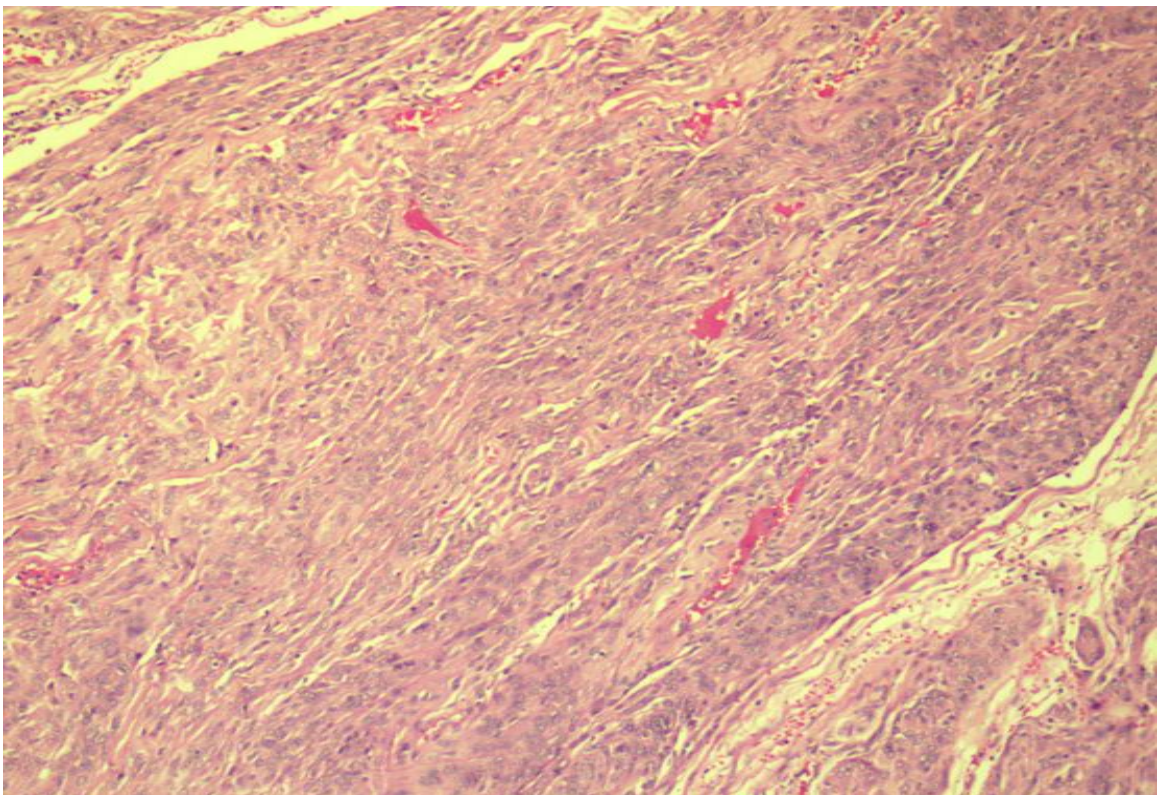


Figure 12f. Patternless sheets in an atypical meningioma. Note the absence of whorls, (H&E X 40).

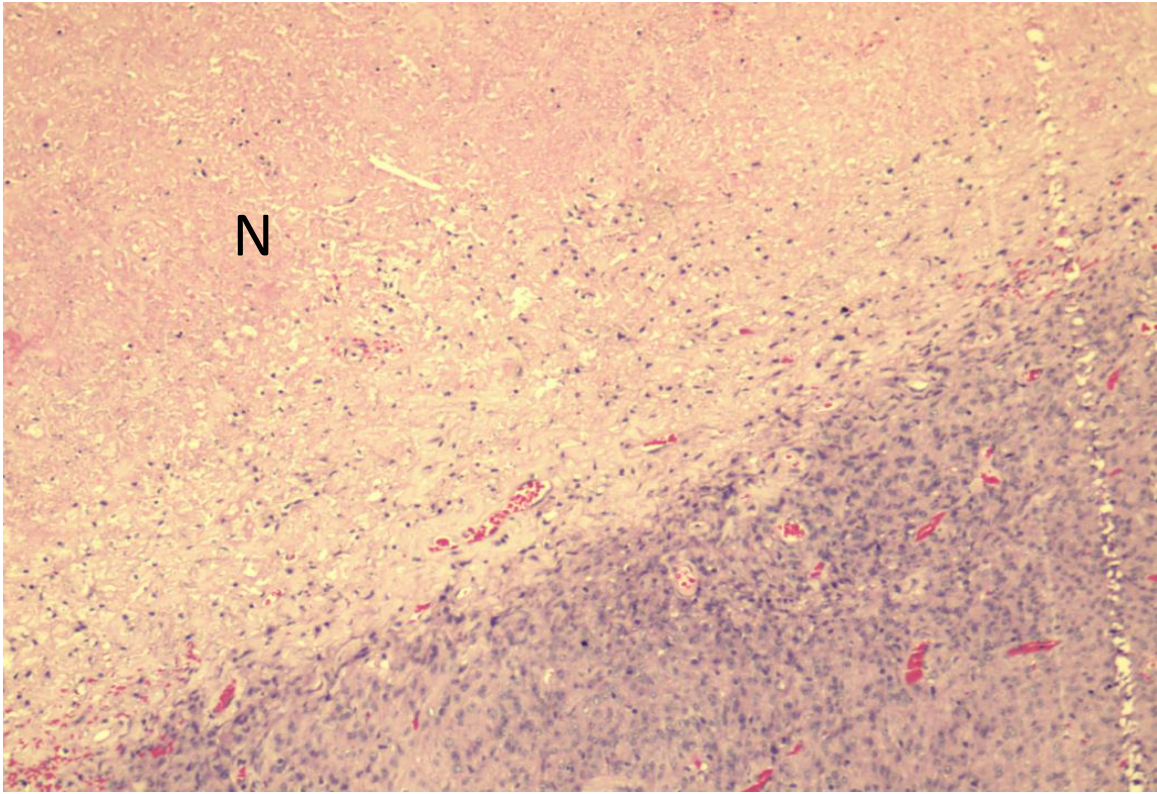


Figure 12g. A large area of geographic necrosis (N) in an atypical meningioma, (H&E X 90).

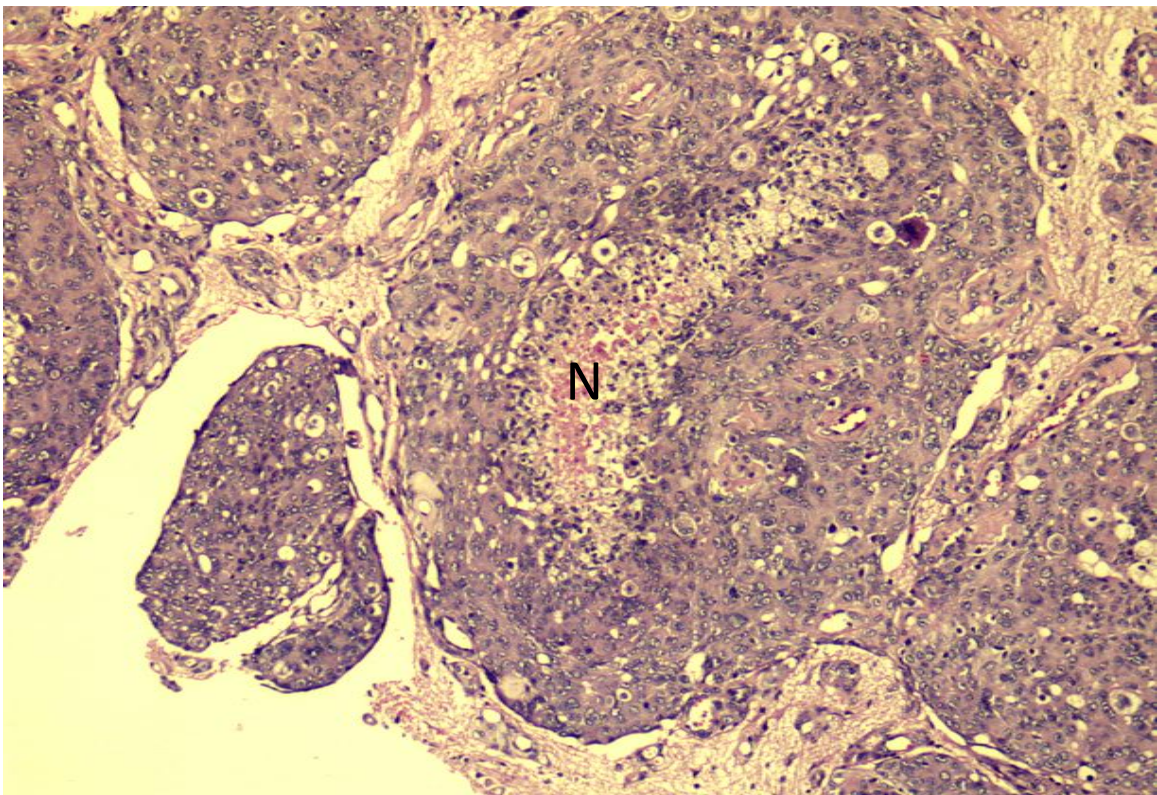


Figure 12h. A focus of micronecrosis (N) in an atypical meningioma, (H&E X 100).

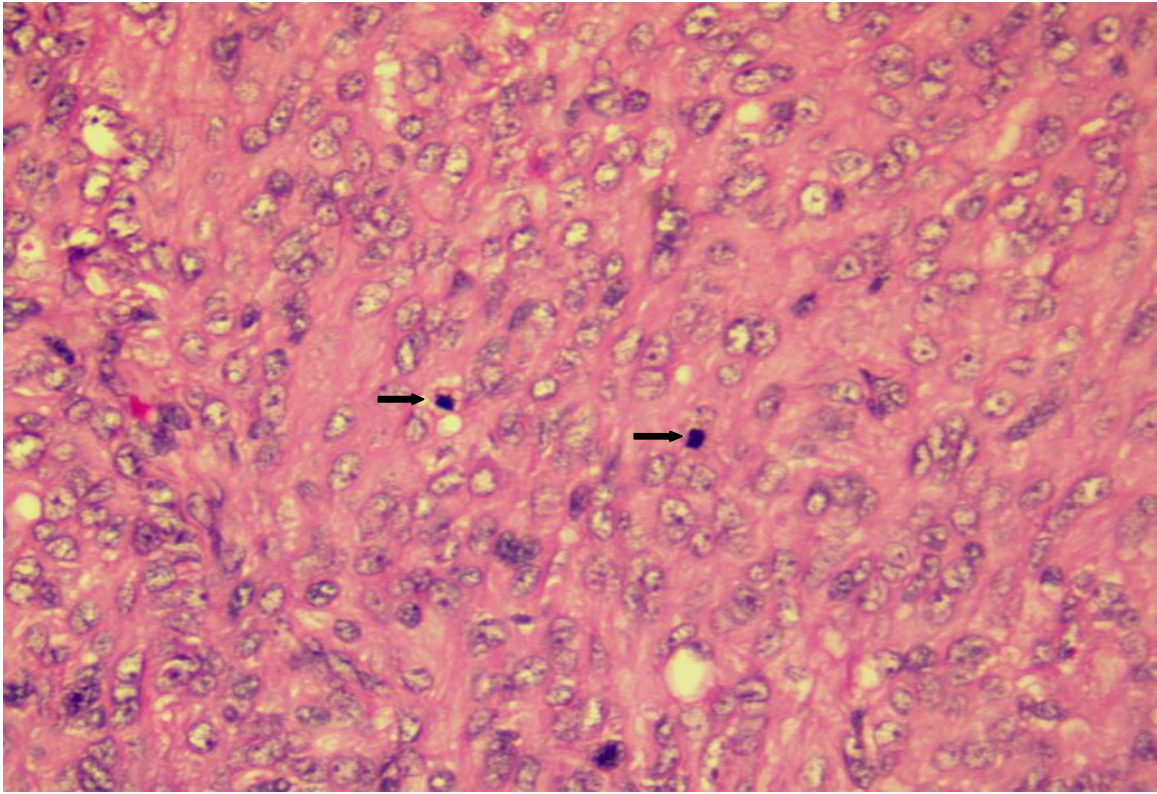


Figure 12i. Mitotic figures (arrows) in an atypical meningioma, (H&E X 400).

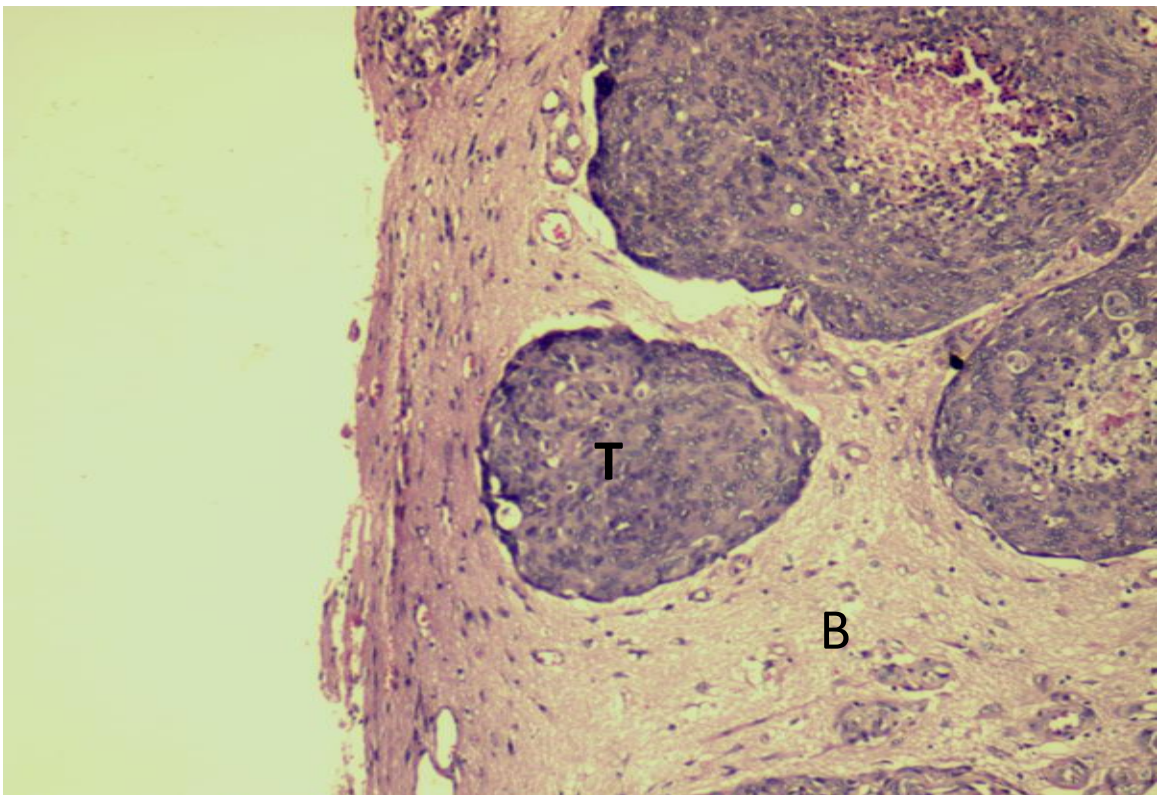


Figure 12j. Brain invasion, islands of tumour (T) infiltrating brain parenchyma (B), (H&E X 90).

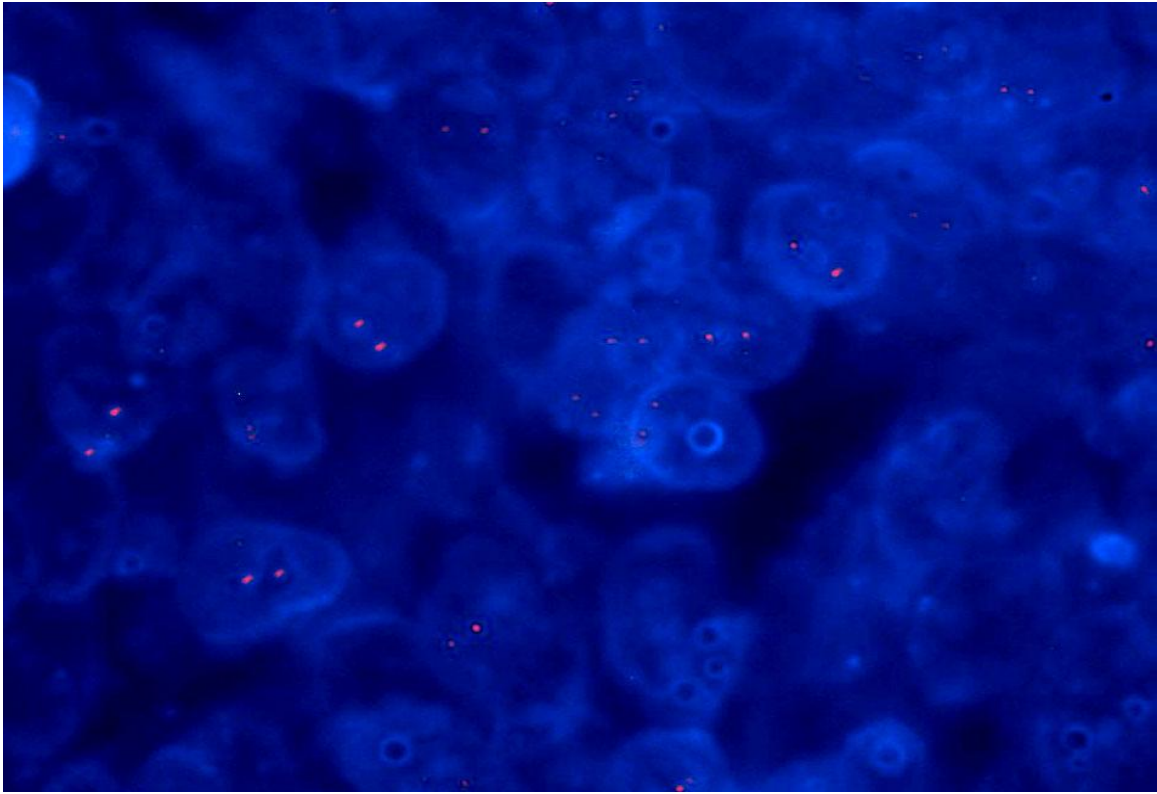


Figure 13a. Normal copy of 14q in a WHO grade I meningioma with a MIB-1 LI of 4%, (MIB-1 LI category < 5%), (X 1000).

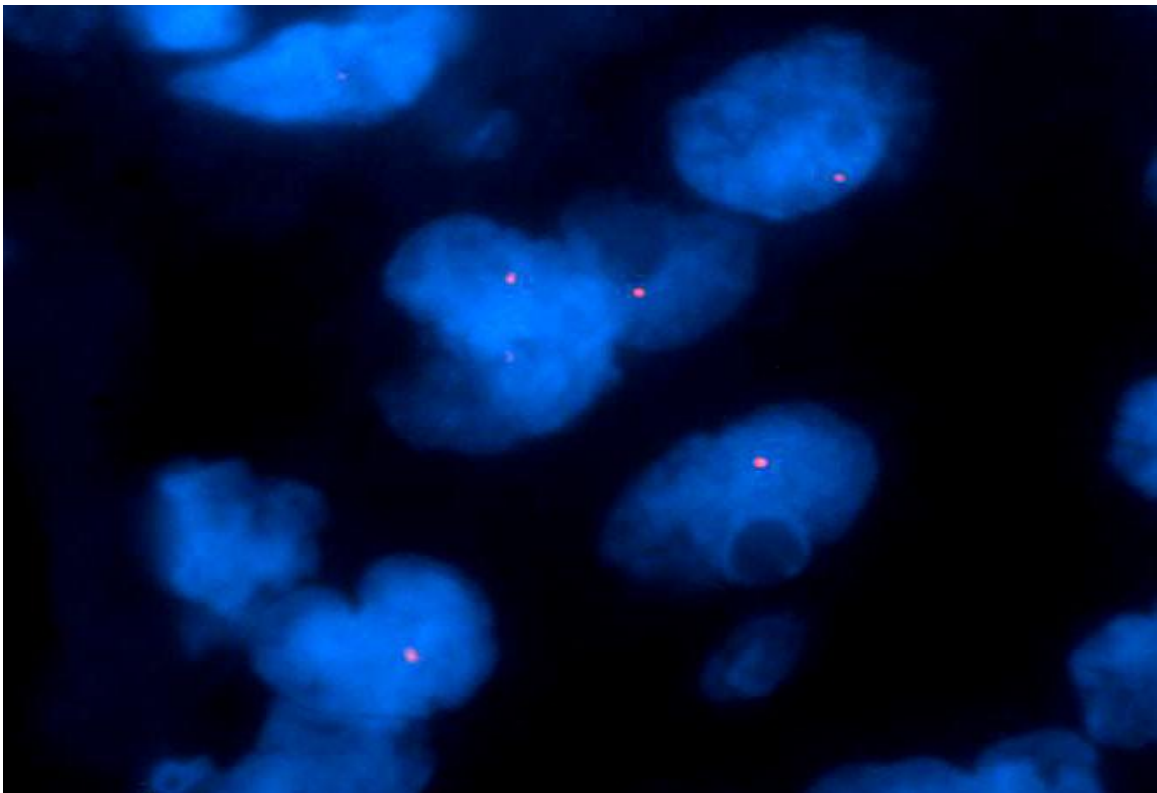


Figure 13b. 14q deletion in a WHO grade I meningioma with a MIB-1 LI of 6%, (MIB-1 LI category 5-7.5%), (X 1000).

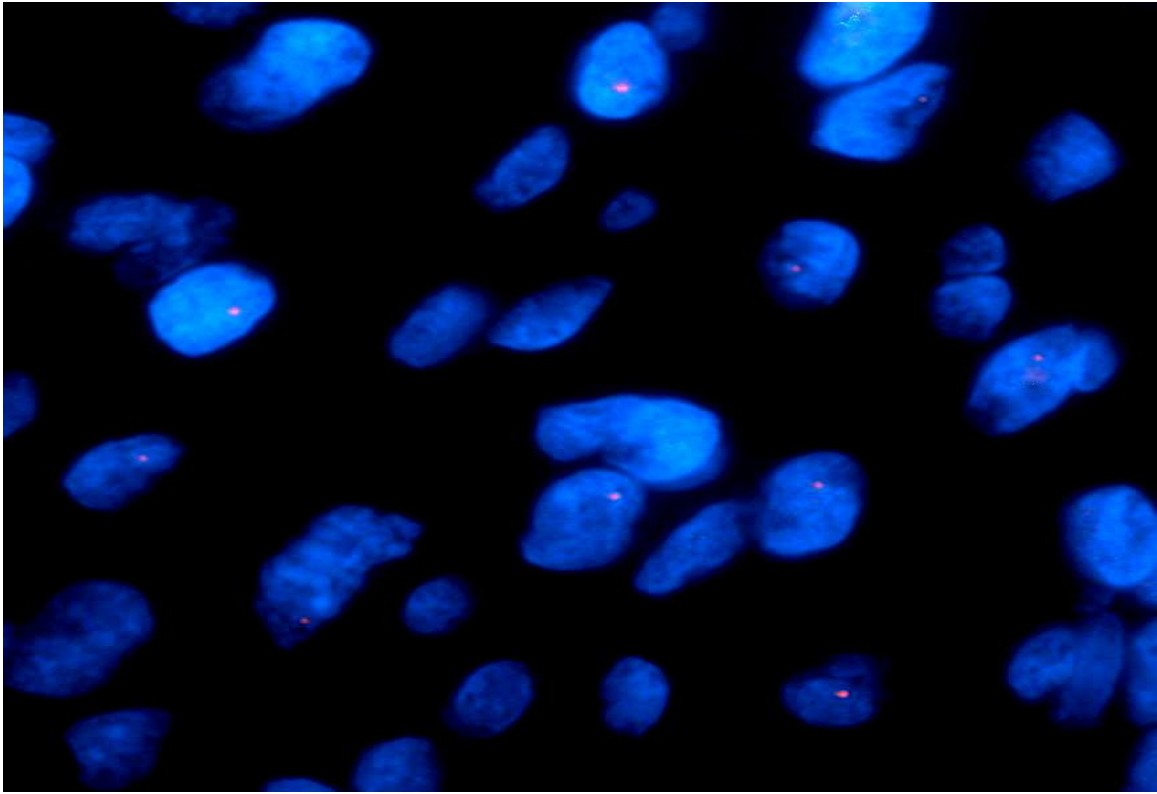


Figure 13c. 14q deletion in a WHO grade I meningioma with a MIB-1 LI of 12%, (MIB-1 LI category >10%), (X 1000).

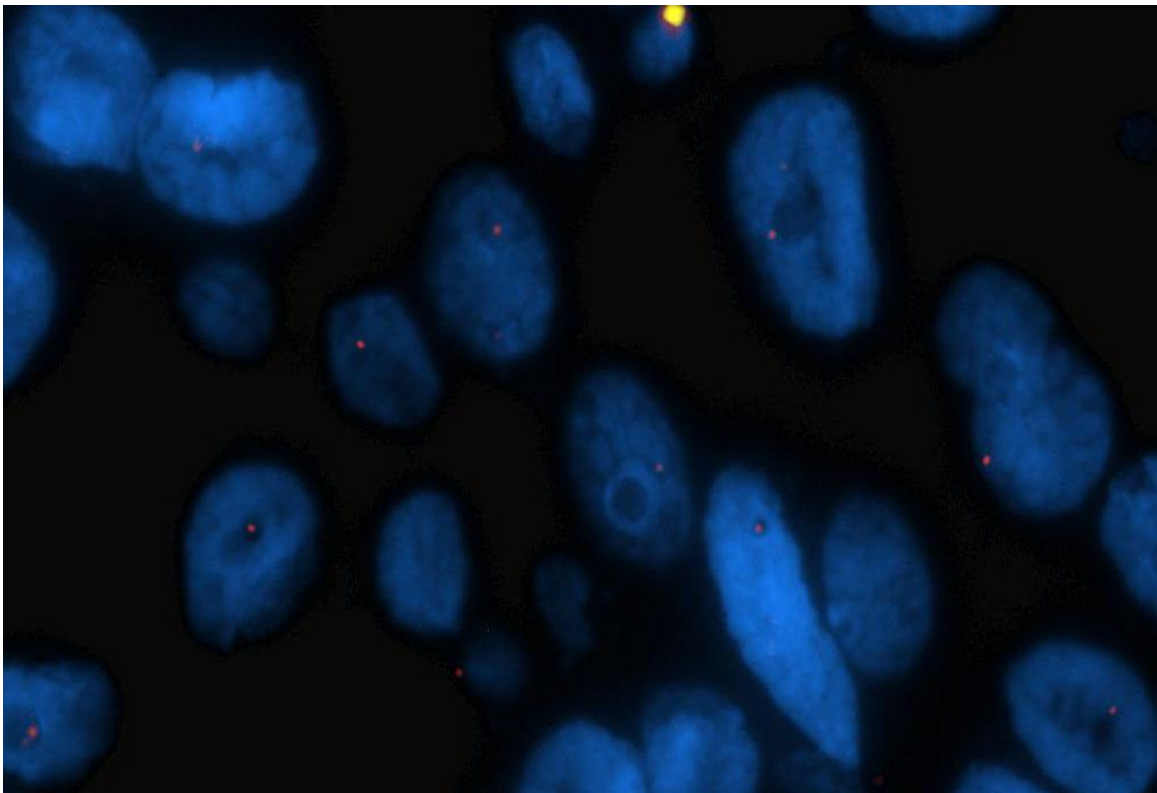


Figure 13d. 14q deletion in a WHO grade II meningioma with a MIB-1 LI of 7%, (MIB-1 LI category 5-7.5%), (X 1000).

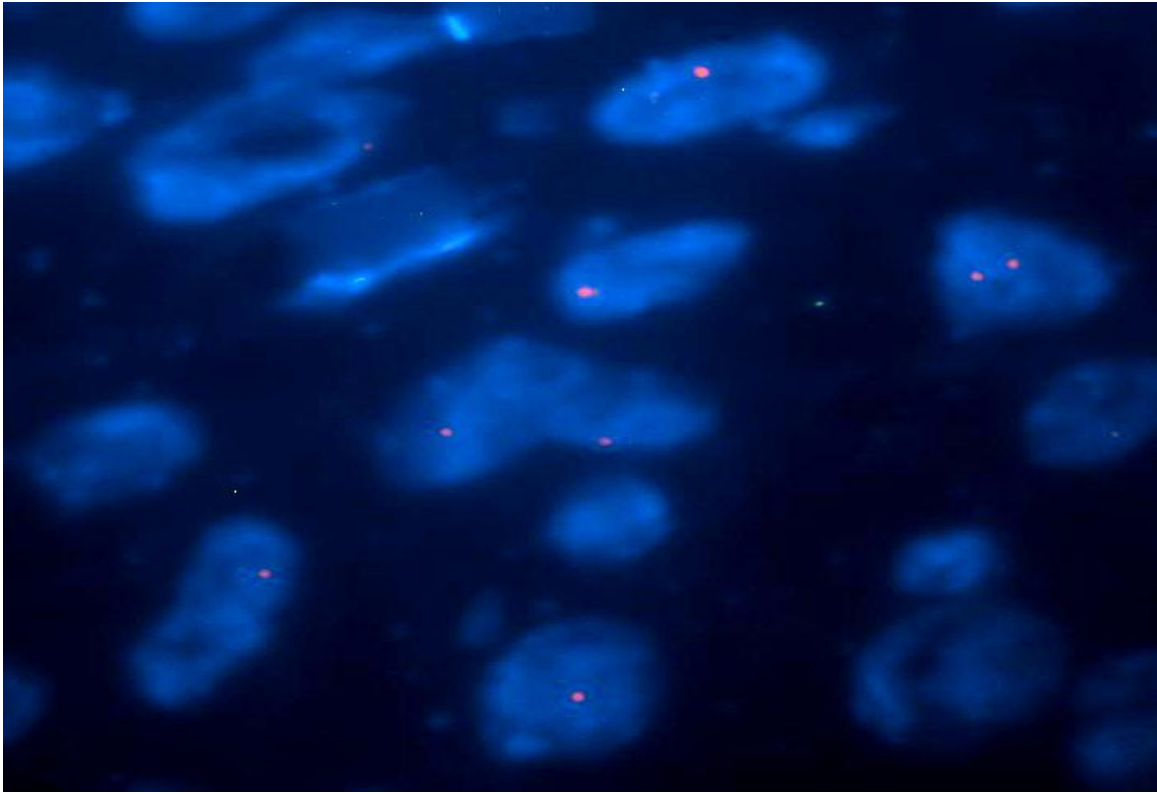


Figure 13e. 14q deletion in a WHO grade II meningioma with a MIB-1 LI of 9%, (MIB-1 LI category 7.6-9.9%), (X 1000).

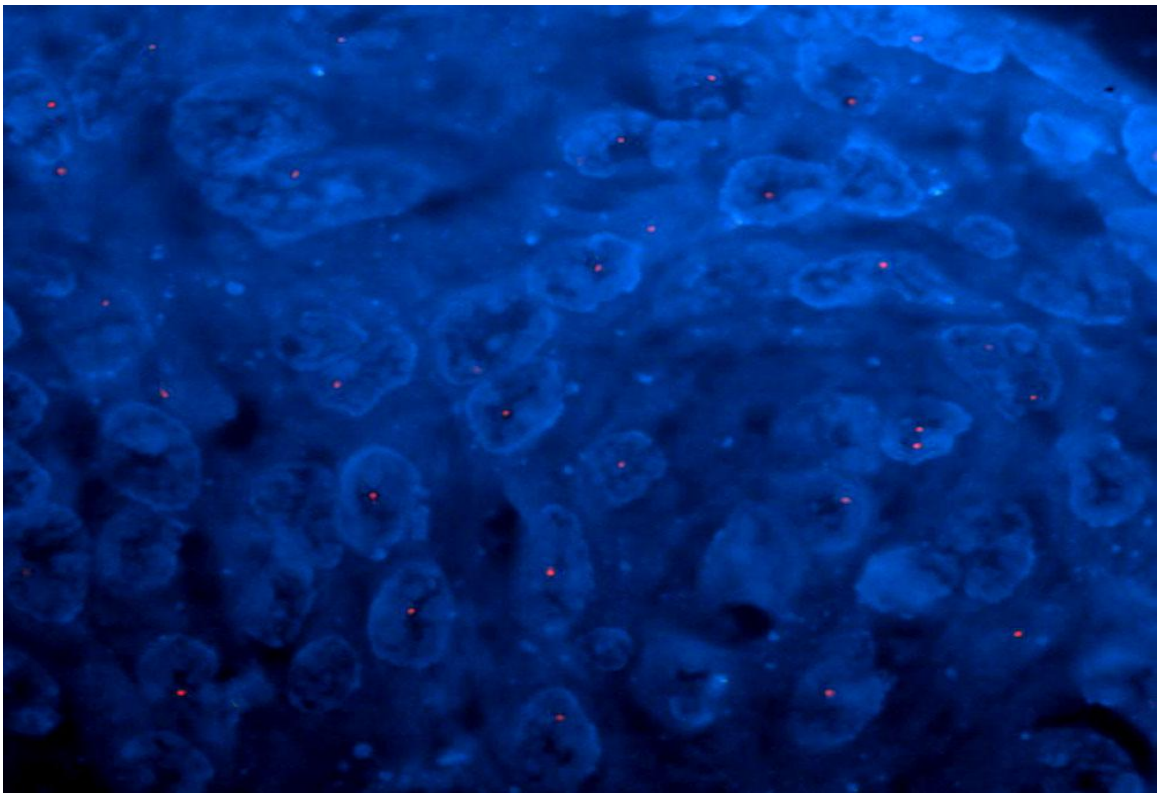


Figure 13f. 14q deletion in a WHO grade II meningioma with a MIB-1 LI of 10%, (MIB-1 LI category 10%), (X 1000).

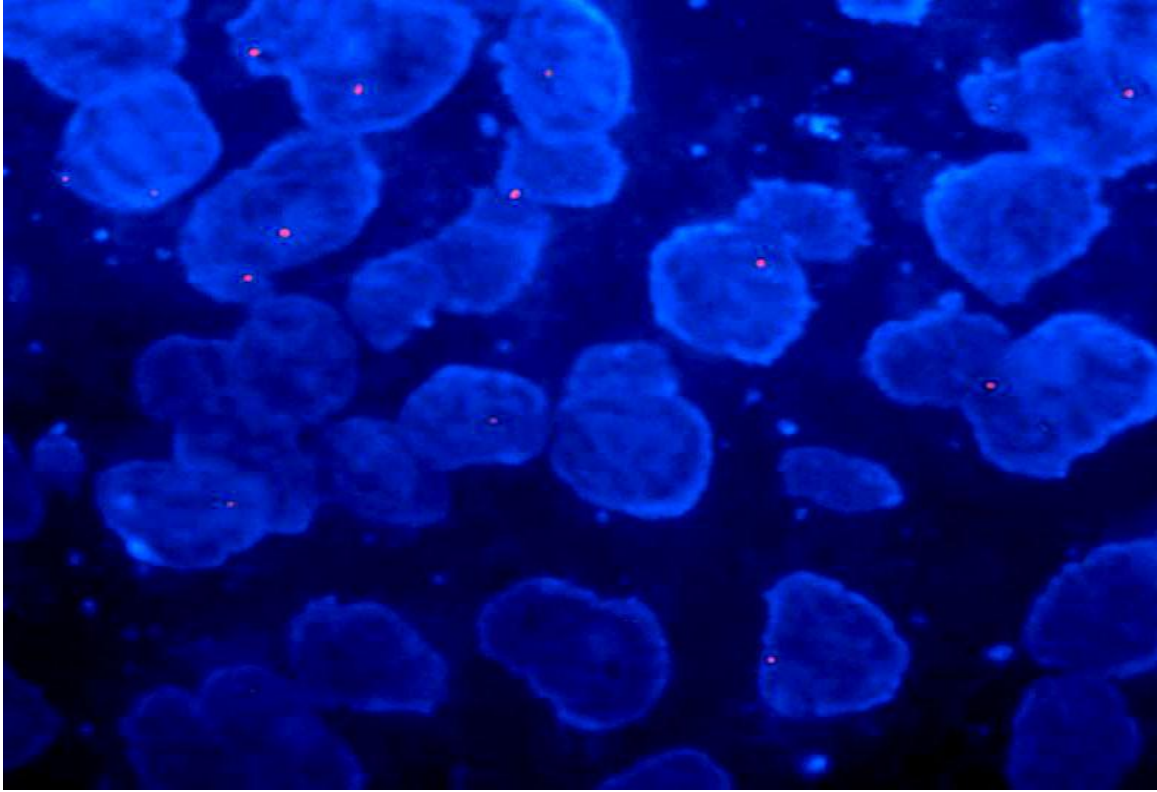


Figure 13g. 14q deletion in a WHO grade II meningioma with a MIB-1 LI of 20%, (MIB-1 LI category >10%), (X 1000).

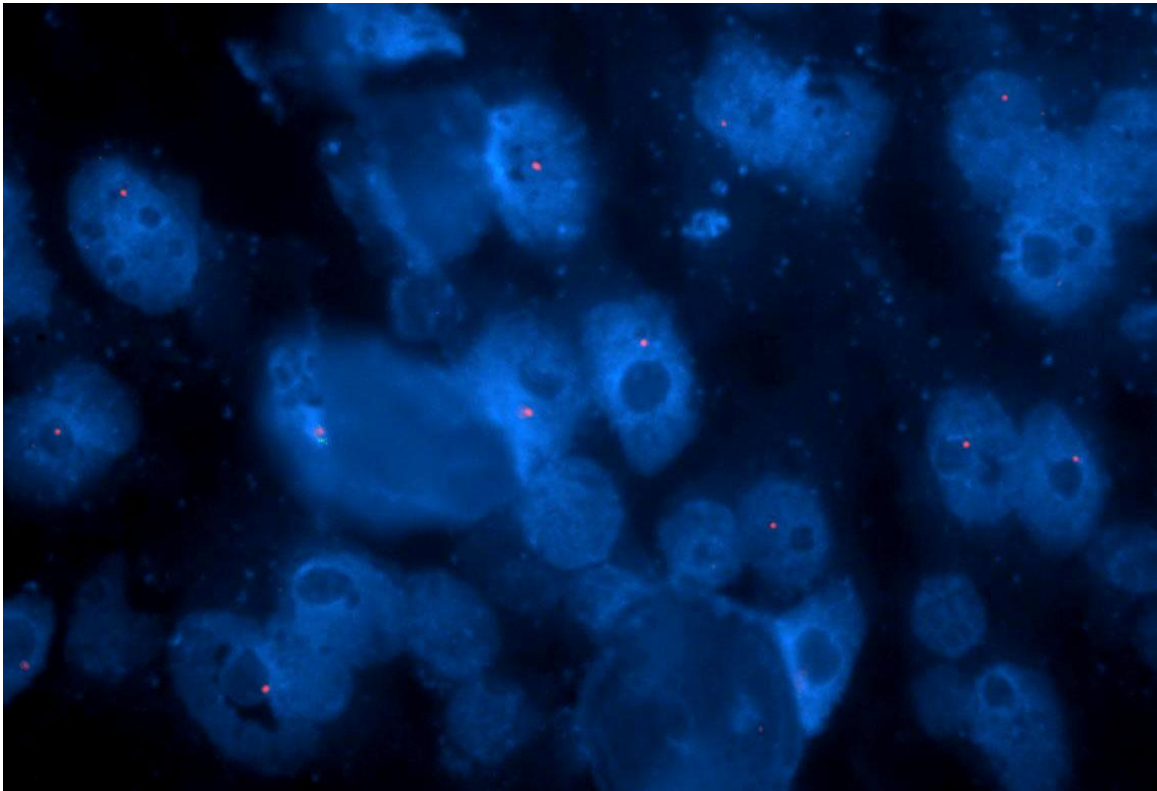


Figure 13h. 14q deletion in a brain invasive meningioma with a MIB-1 LI of 13%, (MIB-1 LI category >10%), (X 1000).